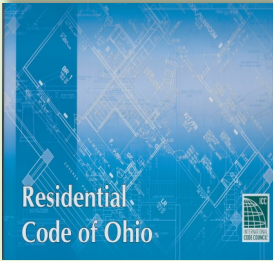


Testing services
 for meeting Ohio

Residential Energy Code,
 Chapter 11



Supporting Builders

Contractors

& Remodelers

to comply with *Energy Efficiency, Chapter 11 of Ohio Residential Building Code*

- Test air leakage of building envelope

Blower Door



- Test air leakage of ducts, air handlers and building cavities

Duct Blaster

⇒ Total Leakage

⇒ Leakage to the Outdoors



Energy Efficiency Certificate - Air Tightness				
Ohio Energy Code: 2015				
Address: 215 Riesling Rd. Union, OH				
Air Sealing Test				
Blower door test at CFM 50 Pa				
Code	Allowance	Measured	Measured	
		d CFM50	ACH	
IECC 2009	< 1 ACH @ 50 Pa.			
HBA Compliance Path #1	< 6 ACH @ 50 Pa.			
HBA Compliance Path #2	< 6 ACH @ 50 Pa.			
Duct Tightness Test - Post-Construction				
Total Leakage:				
Tested at pressure difference of 25 Pa				
Code	Allowance	Floor Area	Allowable	Measured
		Sq. Ft.	CFM	CFM
	per 100 sq. ft. of floor area			
IECC 2009	< 12 CFM			
HBA Compliance Path #1	< 9 CFM			
HBA Compliance Path #2	< 6 CFM			
Leakage to the Outdoors:				
Code	Allowance	Floor Area	Allowable	Measured
		Sq. Ft.	CFM	CFM
	per 100 sq. ft. of floor area			
IECC 2009	< 8 CFM			
HBA Compliance Path #1	< 6 CFM			
HBA Compliance Path #2	< 4 CFM			
Tested by EnergyWize LLC				

* Duct Testing Required for new homes with ducts in unconditioned space



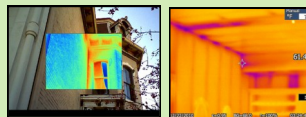
EnergyWize - Wendell Ott - is a certified Energy Analyst
 By the Building Performance Institute (BPI) since 2011.

Home Energy Assessments
 & Efficiency Improvements

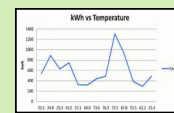
Blower Door Tests



Thermal Imaging



Utility Analysis



Safety Tests



Audits are the first steps in having a comfortable, safe, and energy efficient home.

Our focus is on Air Sealing, Thermal barriers, & Vapor barriers

Residential insulation and
 air sealing
 Vectren and DP&L
 Rebates

EnergyWize, a Vectren and DP&L participating contractor,
 offers insulation and air sealing REBATES — valid when remodeling
 Vectren offers up to \$1,550 / DP&L \$650 for Attic & Wall Insulation and Air Sealing

**Photovoltaic (PV)
Design and Installation**

Residential

Farm / Agricultural

Commercial

**Schools, Non-Profits &
Government facilities**

EnergyWize solar is different

- **Movable**
Ground based and "Ballasted" with weight
Plan to move - take it with you
- **More Power**
- **Lowest Costs - kit concept**
- **Safer Less risks**
- **Top of the line Products**



Easy to orient the array toward the sun



Marketing display unit at our first public showing

Standard unit has 16 PV modules - over 5000 Watts - power for a typical home

**1.1 Mega Watt Solar array
PPA - NO cost to school
Antioch College,
Yellow Springs, OH**



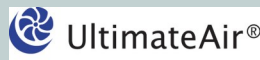
*Can be enclosed
for storage*

*Battery backup
can be added for
critical loads
during power
outages and
emergencies*

- Able to position array toward the sun for more power and away from shading of trees or buildings
- Better tilt angle toward sun - not fixed on a roof out of position
- No concerns for drilling holes in a roof and possible water leaks
- No concerns of moving the racking / array to replace roof shingles
- Safer - no high current electrics - fire hazard - on home's roof
- No concerns of increased costs to accommodate the load-bearing and wind-load of your building, **less risks**
- Ground based arrays are easier to clean, maintain, and remove snow — **increasing electric production**

**Energy Recovery Ventilation
ERV**

**Whole House Ventilation
For Indoor Air Quality**



- Ventilation
- Air Filtration
- Heat Recovery
- Humidity control



**Farm / Agricultural
Energy Audits
& Efficiency Improvements**

**Supporting USDA On-Farm Energy Audit & Implementation Initiative
offered through Natural Resources Conservation Service (NRCS) and
EnSave Technical Service Provider (TSP)**